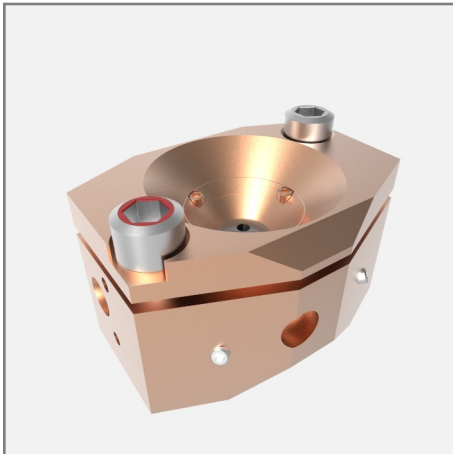


Products



Diacell® Bragg-LT(S)/LT(S) Plus

RELATED PRODUCTS:

- Diacell® CCS-DAC System
- Diacell® PT-DAC System
- Bohler μ Driller
- Optiprex Ruby Line

RELATED ACCESSORIES:

- Diacell® Design 2.5 mm Anvils
- Bohler-Almax Design 3.3 mm Anvils
- BeCu anvil rings
- BeCu 10mm Gasket Blanks
- LT(S) to LT(S) Plus Conversion Kit
- Ruby Powder
- Anvil Support Plates
- Gasket Indenter
- Diacell® easyGlue
- Diacell® Horizon

www.almax-easyLab.com

Almax easyLab bv
Wagenmakerijstraat 5
8600 Diksmuide
Belgium
Ph: +32 51 55 56 37

Almax easyLab Inc (For US and Canada)
Harvard Square -1, Mifflin Place
Cambridge, MA 02138,
United States of America
Ph: + 1 617 701 7245

Diacell® Bragg-LT(S) and Bragg-LT(S) Plus

Screw driven diamond anvil cell for X-ray application at low temperatures.

Part of the Diacell® Bragg Series.

- ◆ The Diacell® Bragg-LT(S) is recommended for X-ray experiments at low temperatures;
- ◆ The large angle apertures enable diffraction studies with high transmission factor and very low background;
- ◆ The Diacell® Bragg-LT(S) Plus also lends itself to optical experiments at high pressures and low temperatures;
- ◆ A combination of left- and right- handed screws makes sure that there is no net torque on the cell;
- ◆ It is relatively easy to convert the Diacell® Bragg-LT(S) into a Diacell® Bragg-LT(S) Plus and vice-versa (Conversion kit);
- ◆ Maximum pressures up to above 100 GPa may be obtained with the Diacell® Bragg-LT(S) and the Diacell® Bragg-LT(S) Plus.

Technical Specifications:

Anvil Design Option	Diacell Design	Boehler- Almax Design
Cell Material	Beryllium Copper Alloy	Beryllium Copper Alloy
Anvil Support Plate	Beryllium	Tungsten carbide
Maximum Pressure	>100 GPa	>100 GPa
Top/Bottom Angles	X-ray: Conical 90°	X-ray: Conical 85°
DAC Diameter / Height	N/A / 35mm	N/A / 35mm
Working Distance to Sample	14 mm	14 mm
Numerical Aperture	0.70	0.67

Specifications subject to change without prior notice.
easyLab and Diacell are registered trademarks of Almax easyLab

