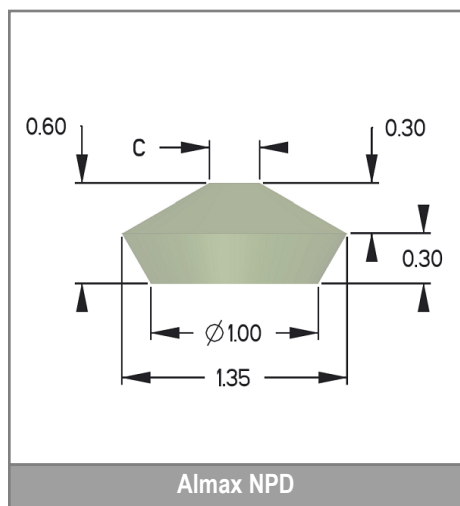


Products



RELATED PRODUCTS:

- (Partial) Perforation
- Patterned anvils
- Diacell® DACs
- PlateDAC
- Horizon LAT and easyGlue

Almax NPD

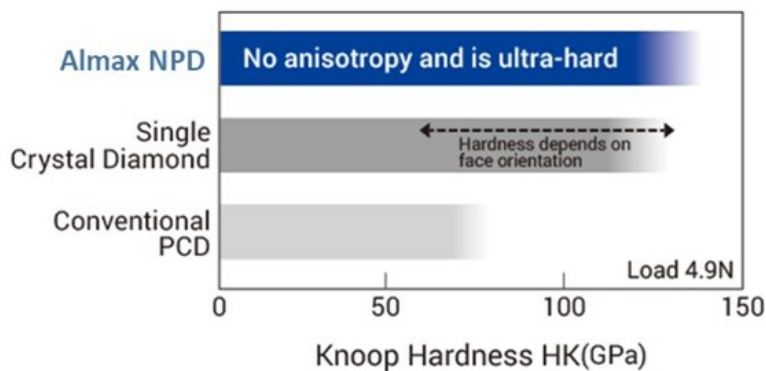
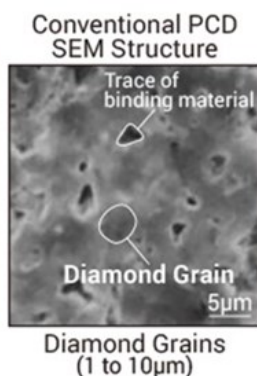
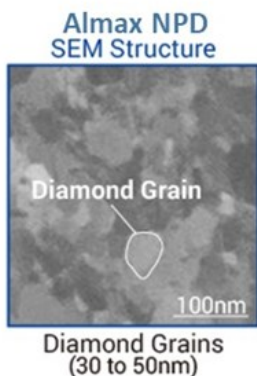
Almax NPD is a polycrystalline diamond that directly binds nanometer-sized diamond particles with high strength without using binders. Almax NPD is harder than single-crystal diamond and has no cleavability.

Almax NPD is a pure diamond, but, unlike single-crystal diamonds, has no anisotropy. Therefore, it displays excellent wear resistance with less uneven wear.

Thanks to its polycrystalline structure, Almax NPD has no cleavability peculiar to single-crystal diamonds and displays excellent fracture resistance.

Currently only available in sizes below 1.00 mm height and 5.00 mm diameter.

Used for large neutron anvils, to avoid glitches with EXAFS or heat dissipation during laser heating HP experiments.



Specifications subject to change without prior notice.  
easyLab and Diacell are registered trademarks of Almax easyLab

[www.almax-easyLab.com](http://www.almax-easyLab.com)

Almax easyLab bv  
Wagenmakerijstraat 5  
8600 Diksmuide  
Belgium  
Ph: +32 51 55 56 37

Almax easyLab Inc (For US and Canada)  
Harvard Square -1, Mifflin Place  
Cambridge, MA 02138,  
United States of America  
Ph: + 1 617 701 7245

